



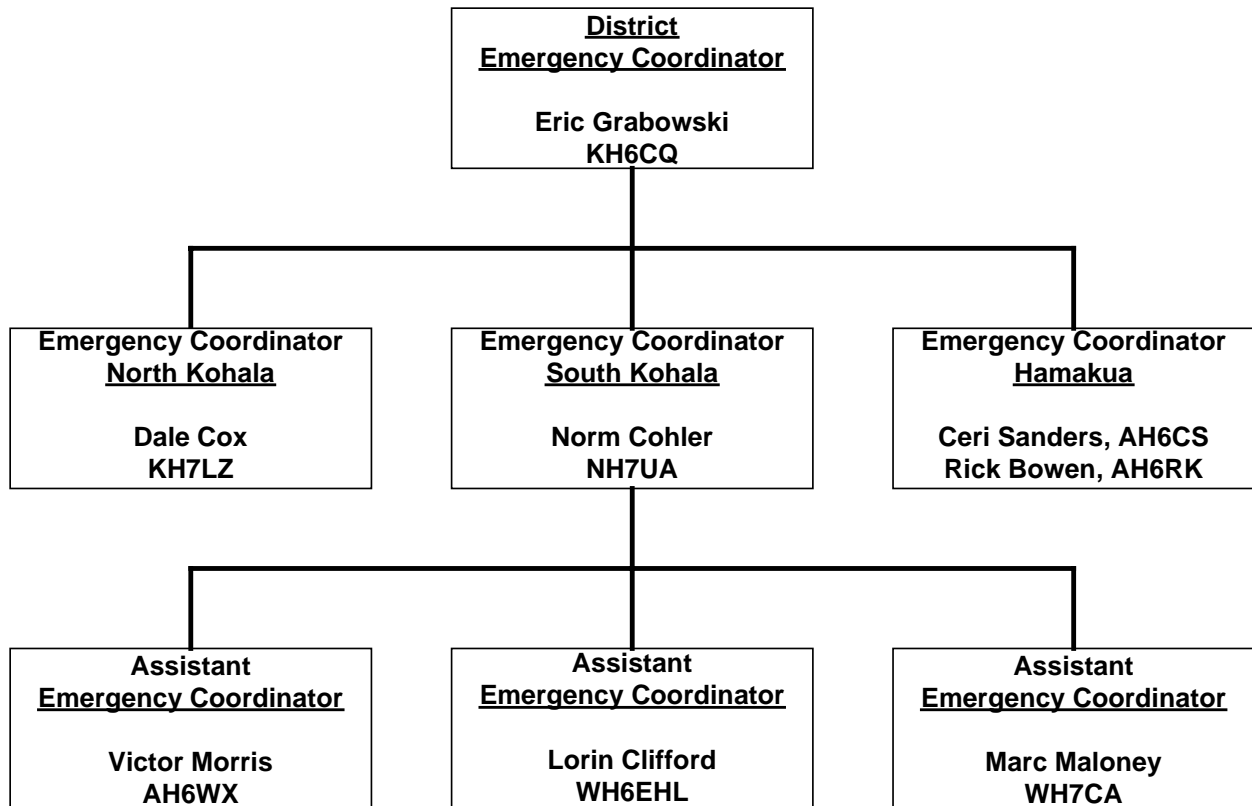
Annex A

North Hawai`i District

A1 INTRODUCTION

A1.1 The ARES Emergency Response Plan for Hawai`i County provides a written guideline of basic information that would be needed in a communications emergency. This annex provides additional information specific to the North Hawai`i district.

A1.2 The organizational chart for the North Hawai`i ARES district appears below.



A2 FREQUENCIES

A2.1 Any member of the North Hawai`i ARES team, who suspects a communications emergency may exist, should monitor the primary HF and VHF frequencies from his or her home, mobile, and/or portable station for information, instruction, and assignment. See the frequency assignment chart below.

A2.2 The first ARES member to arrive at the scene of an event or incident should initiate an operations net on 146.52 MHz. Subsequent ARES members should announce their presence on this net upon arrival at the site. While at the site, all ARES members should monitor 146.52 MHz at all times in order to coordinate ARES team activities.

A2.3 A cross-band repeater will be set up at the site when it is necessary to coordinate local operations with county-wide or state-wide operations for an extended period of time. The use of cross-band repeaters allows hand-held radios to communicate over long distances using lower power than would otherwise be possible. This conserves battery life for the hand-held radios and redirects traffic away from the local operations net being conducted on 146.52 MHz.

Frequency Assignments

Primary	Alternate	Description
HF Bands		
7080 kHz	3900 kHz	HealthComm Statewide HF, Pacific Section ARES Traffic Handling
7088 kHz	3888 kHz	Pacific Section Hailing and Working
7088 kHz	3993.5 kHz	State Civil Defense, RACES
VHF Band		
146.520 MHz	146.460 MHz	Local Hailing and Event / Incident Site Simplex.
146.940 MHz PL=110.9 Hz (2Z)		BIWARN Repeater KH6COM, Haleakala
147.020 MHz PL=103.5 Hz (1A)		RACES Repeater KH6HPZ, Haleakala, State Civil Defense Network
147.040 MHz		RACES Repeater KH6HPZ, Mauna Loa, State Civil Defense Network
147.240 MHz PL=100.0 Hz (1Z)		North Hawai`i Community ARES Repeater NH6EE, S.Kohala
147.320 MHz PL=100.0 Hz (1Z)		BIWARN Repeater NH7HI, Kamuela
UHF Band		
443.650 MHz PL=100.0 Hz (1Z)	448.650 MHz PL=100.0 Hz (1Z)	Kailua Kona and West Hawaii Vicinity
444.225 MHz PL=110.9 Hz (2Z)	449.225 MHz PL=110.9 Hz (2Z)	KH6COM
444.450 MHz PL=88.5 Hz	449.450 MHz PL=88.5 Hz	BIWARN Link Repeater KH6EJ, S. Kohala
444.975 MHz PL=162.2 (5B)	449.975 MHz PL=162.2 (5B)	North Kona and South Kohala Vicinity, NH6EE, S. Kohala
446.000 MHz	446.300 MHz PL=162.2 Hz (5B)	Event/Incident Site Simplex
446.200 MHz PL=162.2 Hz (5B)	446.400 MHz PL=162.2 Hz (5B)	Event/Incident Site Cross-Band Repeater

Revised 2016.06.06

A3 LOCAL SERVED AGENCY CONTACTS

A3.1 The following information supplements the county-wide information contained in the ARES Emergency Response Plan for Hawai'i County.

Agency	Name	Telephone*	E-Mail	Remarks
Hawai'i County Civil Defense	Ed Teixeira	B: 935.0031		CD Administrator; Hilo EOC After hours number.
Hawai'i County Fire Department		B: 961.8336		Non-Emergency Number.
		B:		North Kohala; Company 15
		B:		South Kohala; Company 14
		B: 883.6103		Waikoloa; Company 16
		B: 883.9316		Waikoloa CERT Operations
		B:		Waimea; Company 9
		B:		Honokaa; Company 8
Hawai'i County Police Department		B: 935.3311		Non-Emergency Number
		B:		Kapaau Sub-Station
		B:		Hawi Sub-Station
		B:		Kawaihae Sub-Station
		B: 887.3085		Waimea Station
		B: 887.3080		Mauna Lani Sub-Station
		B:		Honoka'a Station
		B:		Pa`auilo Sub-Station
American Red Cross		B: 377.9311		
Hospitals:				
Hale Ho'ola Hamakua	Romel Dela Cruz	B: 775.7211 F: 775.9977	romeld@hhsc.org	Director, Honoka`a
Kohala Hospital		B: 889.6211		Kapa`au
North Hawai'i Community Hospital		B: 885.4444 B: 881.4696 C: 937.1483		Front Desk, Kamuela Radio room (rm. 238) Security guard on duty
Humane Society		B: 885.4558		Animal Control and Rescue, Waimea
Waikoloa Village Association	WVA Office	B: 833.9422	wvaadmin2@hawaii.rr.com	www.waikoloa.org
	Roger Wehrsig	H: 883.9422 C:	wvaadmin2@hawaii.rr.com	General Manager and Incident Commander
	Jim Albone	H: 883.3483 C: 987.5982	jim@hawaiiandreamproperties.com	Emergency Preparedness Committee Chair
		B: 883.8888		Environmental Control Committee.
		B: 883.9704		Pool and Tennis Court area.
		B: 883.9621		Pro Shop
West Hawai'i Water		B: 883.9221		Water and Sewer Emergencies

A4 MEMBERS

A4.1 North Hawai`i ARES team members are listed by the community in which they reside.

For the current membership list, visit

www.hawaii.ares.info