



ARES Emergency Response Plan for Hawai`i County

1 INTRODUCTION

1.1 The Amateur Radio Emergency Service® (ARES®) is an American Radio Relay League (ARRL) sponsored program that consists of Amateur Radio operators, licensed by the Federal Communications Commission (FCC), who have voluntarily registered their qualifications and equipment for public service duty in the event of a communications emergency.

1.2 The primary mission of the Hawai`i County ARES is to furnish communications to one or more served agencies in the event of a natural or man-made disaster when normal means of communications are inadequate or fail. ARES teams may provide local, county-wide, and/or state-wide communications as required by the nature of the disaster.

1.3 At the national level, ARES has a memorandum of understanding (MOU) with the Department of Homeland Security (DHS), Federal Emergency Management Agency (FEMA), Citizens Corp., Voluntary Organizations Active in Disasters (VOAD), American Red Cross (ARC), National Weather Service (NWS), and Salvation Army (SATERN).

1.4 ARES subscribes to and uses Incident Command System (ICS) protocols.

1.5 Federal regulations [FCC rules Part 97] prohibit the contents of formal messages handled by Amateur Radio operators from being divulged to unauthorized persons. Amateur Radio is a non-commercial licensed service and amateur radio operators may not be directly compensated for their participation.

1.6 The organizational structure of the Hawai`i County ARES leadership officials is summarized in appendix A. ARES volunteers report to an Emergency Coordinator (EC) in their local community who, in turn, reports to a District Emergency Coordinator (DEC). DEC's report to the Section Emergency Coordinator (SEC). The SEC is responsible for sending reports to the ARRL Section Manager (SM) or his assistant.

1.7 In addition to the national organizations listed in 1.3 above, the following local agencies could be served under this plan: Hawai`i State Civil Defense, Hawai`i County Civil Defense, Hawai`i County Fire Department, Hawai`i County Police Department, Community Hospitals, Community Associations, as well as other local agencies or groups requesting assistance with communications.

2 PURPOSE

2.1 The purpose of this plan is to provide a written guideline containing the minimum information that would be needed in a communications emergency.

2.2 This document shall be shared with our served agencies to clarify the structure and capabilities of the Hawai`i County ARES program.

3 ACTIVATION

3.1 In the event of a communications emergency, an official of a served agency should notify any one of the ARES leadership officials listed in appendix A of this document that Amateur Radio operators may be needed to provide backup communications for the agency. This notification may be pre-arranged for automatic activation.

3.2 Upon becoming aware that a communications emergency exists, the notified ARES leadership official will notify the DEC's and EC's in the affected areas and request them to activate their teams.

3.3 EC's in the affected areas, or their assistants, will open tactical nets on the primary local VHF and regional HF frequencies and send an initial situation report (SITREP) to the DEC's and to the SEC. The SEC is responsible for reporting to the SM.

3.4 Any member of an ARES team, who for any reason suspects a communications emergency may exist, shall activate the primary VHF and HF nets and report these conditions to the EC and/or the DEC or their assistants.

4 MOBILIZATION

4.1 Upon becoming aware that a communications emergency exists, all ARES members shall check into the primary local VHF net from their home, mobile, and/or portable station for information, instructions, and assignments.

4.2 The EC in an affected area shall contact the local ICS Logistics Officer in order to coordinate all ARES related communications activities with the ICS Incident Commander.

4.3 The EC shall dispatch individual mobile and/or portable units as the situation warrants.

4.4 The EC may designate one or more stations as "key stations" which shall be used extensively during the communications emergency.

4.5 If one or more of the designated emergency shelters should be opened, the EC may dispatch an emergency radio team (ERT) to operate a station at each shelter.

4.6 The EC shall assign a liaison station to the Big Island Wide Area Repeater Network (BIWARN) and the Hawai`i inter-island radio networks if the situation warrants.

4.7 The EC may direct the operators of home stations not on emergency power to provide support at designated key stations if the situation warrants.

5 OPERATION

5.1 All ARES members shall follow standard operating procedures governing public service communications promulgated by the ARRL and the FCC.

5.2 All radio networks will be directed nets and all stations shall call the designated net control station (NCS) for permission to transmit. Every ARES member is responsible for knowing and using proper net procedures.

5.3 Tactical call signs may be used as long as FCC rules regarding station identification are satisfied.

5.4 All formal messages originated from a served agency shall be written in either ARRL radiogram or ICS-213 format and each message shall be signed by the person who originated it and who takes responsibility for its content.

5.5 Training shall be an ongoing activity to ensure that Amateur Radio operators, who are members of the Hawai`i County ARES, will be ready to respond in the event a communications emergency occurs. Local tests and exercises shall be scheduled to maintain readiness.

5.6 The Hawai`i County ARES shall participate in an annual communications preparedness test, conducted in conjunction with the nationwide simulated emergency test (SET), sponsored by the ARRL and the Hawai`i State Civil Defense.

Appendix A ARES Organization

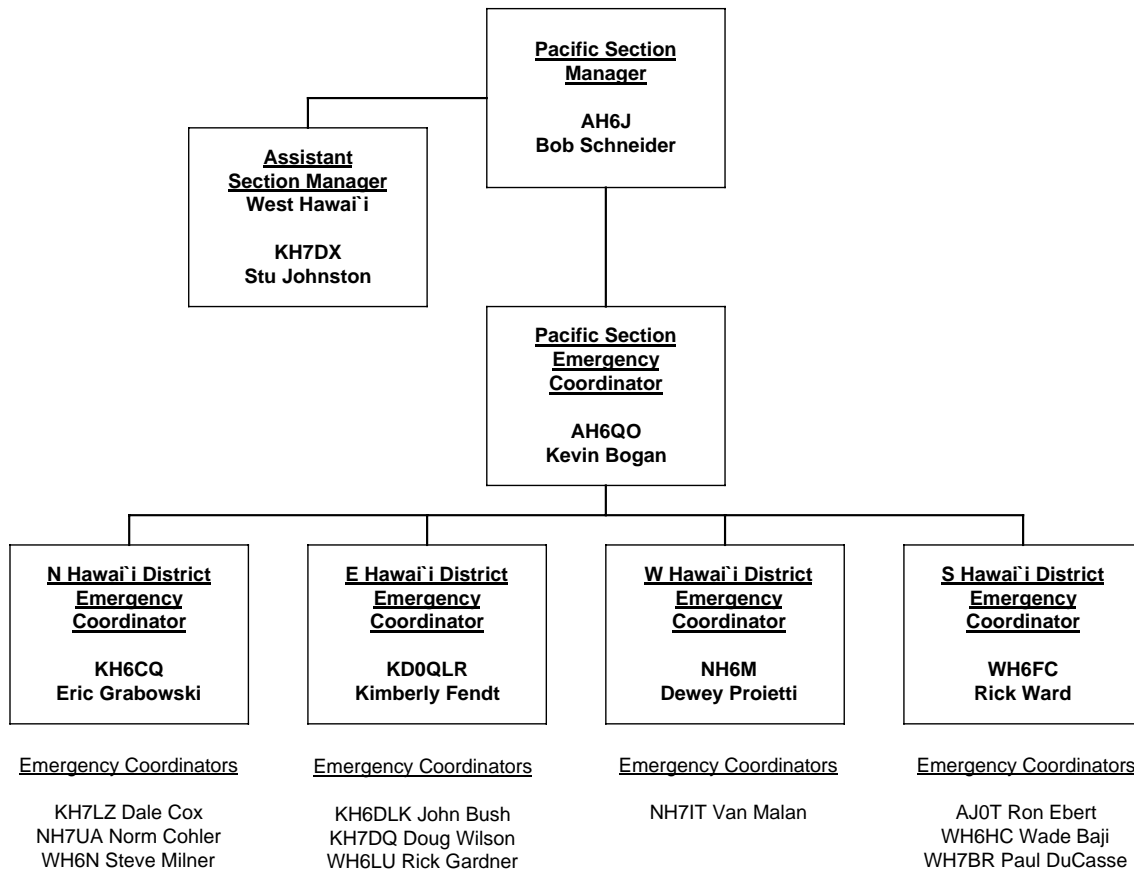


FIGURE A-1 Organizational Chart for Hawai'i County ARES.

Appendix A (continued) ARES Organization

Contact List for ARES Leadership Officials

ARRL Leadership Position	Name	Location	Call Sign	Telephone*	E-Mail
SM Pacific Section	Bob Schneider	Kea`au	AH6J	H: 966.8146 C: 345.6390	ah6j@arrl.org
ASM Pacific Section	Stu Johnston	Kailua-Kona	KH7DX	H: 326.9325	stumanchu2000@yahoo.com
SEC Pacific Section	Kevin Bogan	Honolulu	AH6QO	H: C: 778.4697	ah6qo@arrl.org
DEC North Hawai`i	Eric Grabowski	Waikoloa Village	KH6CQ	H: 883.2536 C: 938.2536	kh6cq@arrl.net
DEC East Hawai`i	Kim Fendt	Mtn View	KD0QLR	C: 430.7297 C: 430.1884	kimber@sfendt.net
DEC West Hawai`i	Dewey Proietti	Kailua-Kona	NH6M	H:895.2687 P: 925.3000	nh6m@hawaii.rr.com
DEC South Hawai`i	Rick Ward	Ocean View	WH6FC	H: 929.7673 C: 938.3058	wh6fc@arrl.net
EC North Kohala	Dale Cox	Kapa`au	KH7LZ	H: C: 557.2217	kh7lz@arrl.net
EC South Kohala	Norm Cohler	Kawaihae	NH7UA	H: 882.1092	nh7ua@arrl.net
EC Hamakua	Steve Milner	Waiki`i	WH6N	H: C: 938.8437	smilner@keck.hawaii.edu
EC Hilo	John Bush	Hilo	KH6DLK	H: 935.5500	
EC Volcano (N) - Mtn View	Doug Wilson	Volcano	KH7DQ	H: 985.7540	DOUSCELLE@aol.com
EC Pahoa – Kalapana	Rick Gardner	Kurtistown	WH6LU	H: 968.7524 C: 989.4579	wh6lu609@yahoo.com
EC Mtn View – Kea`au					
EC Kailua-Kona	Van Malan	Kalaoa	NH7IT	H: 325.5223	vmalan@earthlink.net
EC Volcano (S)	Paul DuCasse	Volcano	WH7BR	H: C:	ducasse@hawaii.rr.com
EC Pahala	Ron Ebert	Punalu`u	AJ0T	H: 928.0027 C: 217.5231	ebertr001@hawaii.rr.com
EC Na`alehu	Wade Baji	Na`alehu	WH6HC	H: 929.9923 C: 938.8801	kawai@aloha.net
EC Southwest Hawai`i	Rick Ward	Ocean View	WH6FC	H: 929.7673 C: 938.3058	wh6fc@arrl.net

*Area code is 808. H is home telephone number. C is cellular telephone number. P is pager.
Revised 2014.03.03