

# **NORTH HAWAII AMATEUR RADIO EMERGENCY SERVICE**

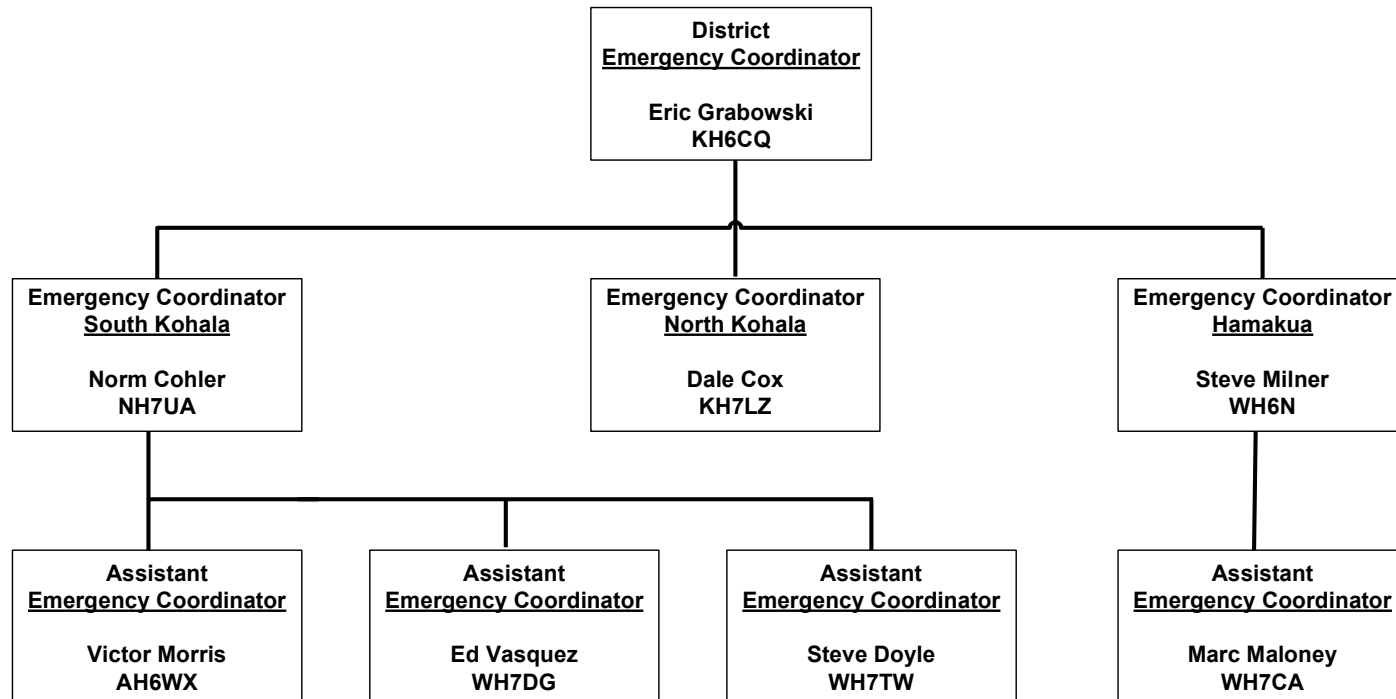
## **EXECUTIVE SUMMARY**

**Presented By**

**Eric Grabowski, KH6CQ**

**District Emergency Coordinator  
Hawaii Amateur Radio Emergency Service**

# ORGANIZATIONAL CHART



# WE ARE

## Additional Eyes and Ears for

- Healthcare Association of Hawaii – HEALTHCOMM
- Medical Reserve Corps
- National Weather Service – SKYWARN
- American Red Cross
- State and County Civil Defense – CERT
- Salvation Army – SATURN
- Other Agencies and NGOs

# WE REPORT

## Threats to Life and Property

- Injured or Trapped People
- Uncontrolled Brush Fires
- Damage to Structures
- Bridge and Road Failures or Obstructions
- Gas, Water, Electrical, or Chemical Hazards
- Unusual Weather Conditions

# WE ACTIVATE

- **Upon Notification for a Predicted Event  
like a Hurricane or Tsunami**
- **Immediately After an Abrupt Event  
like an Earthquake or Volcanic Eruption**

You Should Self Activate  
When Any Unusual Event Occurs  
Monitor as Many Watering Hole Frequencies as Possible

# WE USE

- **VHF/UHF SIMPLEX**

- 2 METERS 146.52 and 146.46 MHz
- 440 MHZ 446.000 MHz and others for cross-band repeaters

- **VHF/UHF REPEATERS**

- 2 METERS BIWARN, State RACES Network,  
North Hawaii Community ARES Repeater (147.24 MHz)
- 440 MHZ 443.650 MHz and others

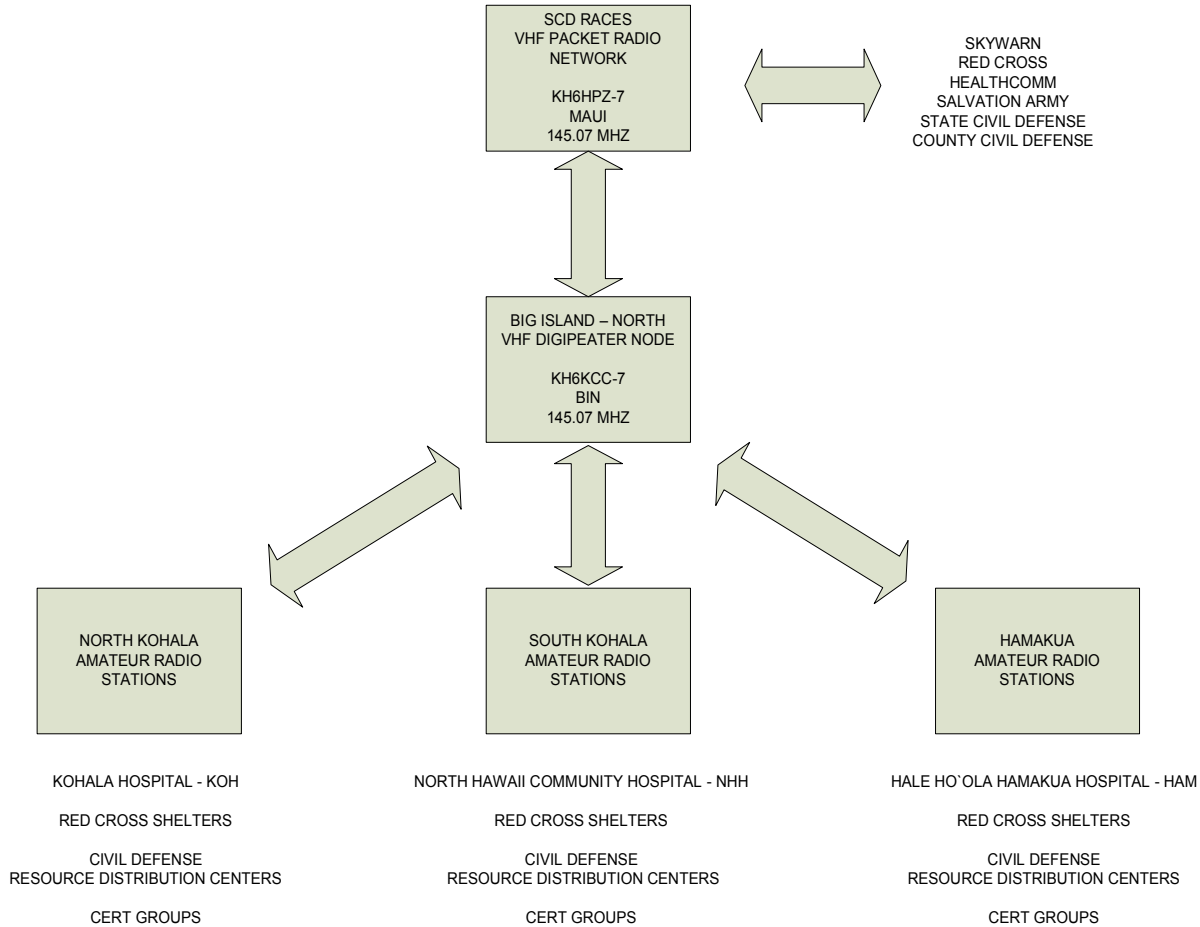
- **HF SIMPLEX**

- 40 METERS 7088 and 7080 kHz
- 75 METERS 3888 and 3900 kHz

# NORTH HAWAII CARES REPEATER PRIMARY COVERAGE MAP



# NORTH HAWAII CARES PACKET VISION





# WHY PACKET?

- Reporting by Packet is Much Faster Than By Voice
- Messages Can Be Received with No Operator Intervention
- Multiple Recipients All Get the Exact Same Message
- Complex Information is Transferred Error Free
- Bulletin Board System Provides Mail Drops for Multiple Users
- Key Stations Have Pre-assigned Tactical Call Signs
- Inter-Island Messaging Can Be Achieved by Leveraging the State Packet Network

# SUMMARY

Amateur Radio Communications Are Most Valuable  
Immediately After the Onset of an Event

Are You Ready to Respond Right Now?

If Not

Decide What You Need To Do and

**Get It Done**

# MORE INFORMATION IS HERE

<http://www.hamradioandmore.com/khrc.htm>

<http://groups.yahoo.com/group/khrc/>

<http://groups.yahoo.com/group/pacsecares/>

<http://www.qsl.net/ah6rh/am-radio/in-hawaii.html>

<http://www.arrl.org>

***When all else fails ... amateur radio works***

# BE AWARE: PREPARE

